



Glyvursnes

RO-RO ship



MAIN PARTICULARS

Built: 1999

Flag: FAS-Faroe Islands

Homeport: Tórshavn

IMO no.: 9198977

Call sign: OZ2214

PRINCIPAL DIMENSIONS

Length overall: 153.45 m

Breadth moulded: 20.60 m

Depth: 14.15 m

TONNAGE

DWT on 7.072 m draught – 7226 t

GT London rules 1969 – 10488 t

NT London rules 1969 – 3147 t

TANK CAPACITY

HFO: 945 m³

MGO: 132 m³

Water ballast: 3979 m³

RO-RO CAPACITY

DECK	AREA	LANE METER	MAX LOAD	VOLUME	DECK HEIGHT
Weatherdeck	2046 m ²	690	2,5 t/m ²		4.60 m
Maindeck	1852 m ²	611	5.0 t/m ²	9335 m ³	5.00 m*
Tanktop	929 m ²	305	8.0 t/m ²	4929 m ³	4.60 m
Total	4827 m²	1609			

*Except under ramp

REEFER PLUGS

Reefer plugs 4 pole, 380 V, 50 Hz, 32 A

20 reefer plugs on main deck.

30 reefer plugs on weather deck.

RAMPS

Two stern ramps

Length 12 m

Width 12.75 m and 4.1 m

Lower hold fixed ramp

Weather deck fixed ramp

ACCOMMODATION FOR DRIVERS

Accommodation for 12 drivers in 6 cabins

MACHINERY

Main engine, Wärtsilä Vasa, 16V46B, 15 600 kW

Scrubber, Croll Reynolds

2 x Diesel generators, 534 kW each

Emergency generator, 510 kW

Shaft generator, 1.500 kW

Bow thruster, 800 kW

Stern thruster, 495 kW

SPEED AND CONSUMPTION PER DAY

Full draft

21.0 kn on abt 65 t

Trailer draft

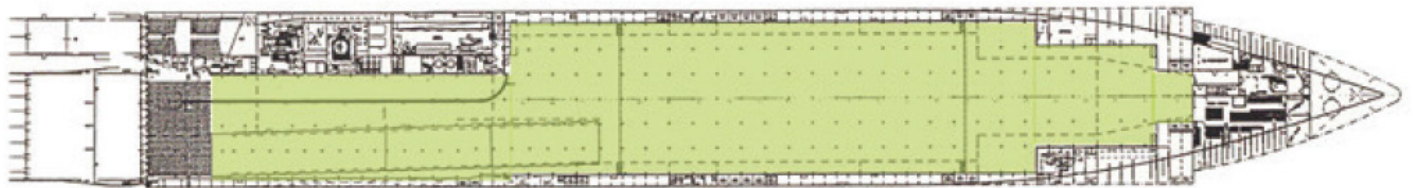
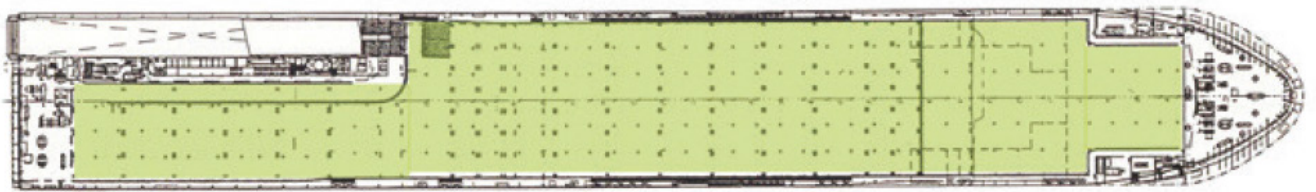
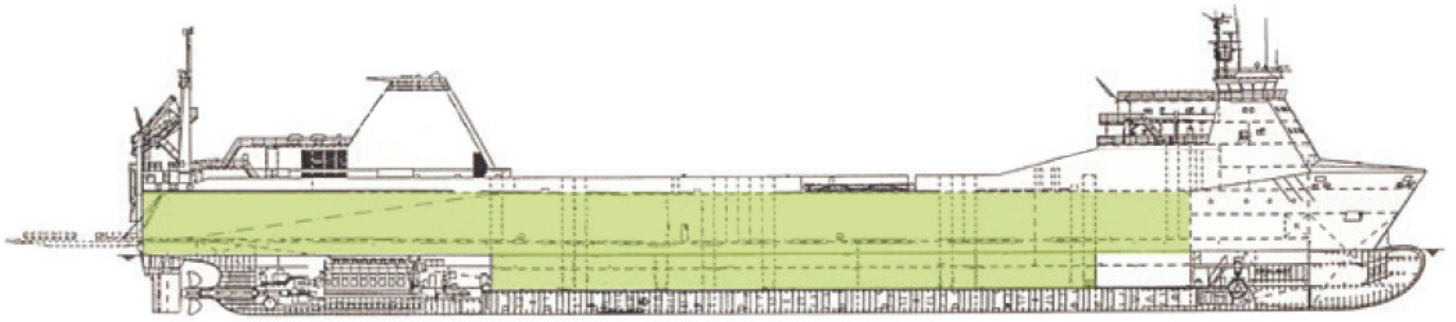
23.0 kn on abt 65 t

Trailer draft

19.0 kn on abt 35 t

Harbour consumption abt

0,5 t/h MGO



Details are believed to be correct but given without guarantee. Description not to be used in charterparties.

All details are given in good faith.

FAROE ISLANDS

Eystara bryggja
P.O. Box 3296
110 Tórshavn
+298 309600
cargo@cargo.fo

DENMARK

Erik Sondrupsvej
10-12 9850 Hirtshals
+45 96 55 03 50
hirtshals@cargo.fo

ICELAND

Fornbúðir 5
220 Hafnarfjörður
+354 470 2800
island@cargo.fo

THE NETHERLANDS

Mannheimweg 3
3197 LR Rotterdam-Botek
+31 (0) 10 490 22 80