



# Glyvursnes

RO-RO ship

## MAIN PARTICULARS

Built: 1999

Flag: FAS-Faroe Islands

Homeport: Tórshavn

IMO no.: 9198977

Call sign: OZ2214

## PRINCIPAL DIMENSIONS

Length overall: 153.45 m

Breadth moulded: 20.60 m

Depth: 14.15 m

## TONNAGE

DWT on 7.072 m draught – 7226 t

GT London rules 1969 – 10488 t

NT London rules 1969 – 3147 t

## TANK CAPACITY

HFO: 945 m<sup>3</sup>

MGO: 132 m<sup>3</sup>

Water ballast: 3979 m<sup>3</sup>

## RO-RO CAPACITY

DECK	AREA	LANE METER	MAX LOAD	VOLUME	DECK HEIGHT
Weatherdeck	2046 m <sup>2</sup>	690	2,5 t/m <sup>2</sup>		4.60 m
Maindeck	1852 m <sup>2</sup>	611	5.0 t/m <sup>2</sup>	9335 m <sup>3</sup>	5.00 m*
Tanktop	929 m <sup>2</sup>	305	8.0 t/m <sup>2</sup>	4929 m <sup>3</sup>	4.60 m
<b>Total</b>	<b>4827 m<sup>2</sup></b>	<b>1609</b>			

\*Except under ramp

## REEFER PLUGS

Reefer plugs 4 pole, 380 V, 50 Hz, 32 A

20 reefer plugs on main deck.

30 reefer plugs on weather deck.

## RAMPS

Two stern ramps

Length 12 m

Width 12.75 m and 4.1 m

Lower hold fixed ramp

Weather deck fixed ramp

## ACCOMMODATION FOR DRIVERS

Accommodation for 12 drivers in 6 cabins

## MACHINERY

Main engine, Wärtsilä Vasa, 16V46B, 15 600 kW

Scrubber, Croll Reynolds

2 x Diesel generators, 534 kW each

Emergency generator, 510 kW

Shaft generator, 1.500 kW

Bow thruster, 800 kW

Stern thruster, 495 kW

## SPEED AND CONSUMPTION PER DAY

Full draft

21.0 kn on abt 65 t

Trailer draft

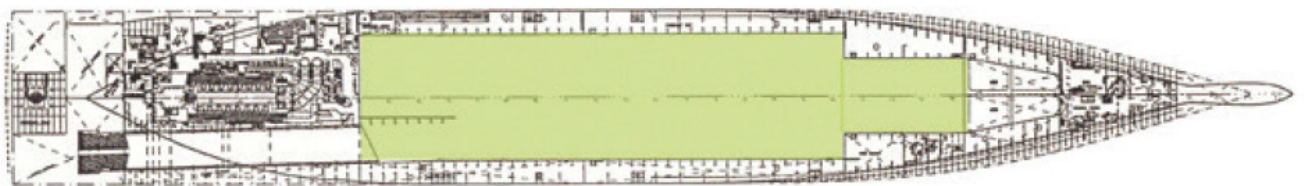
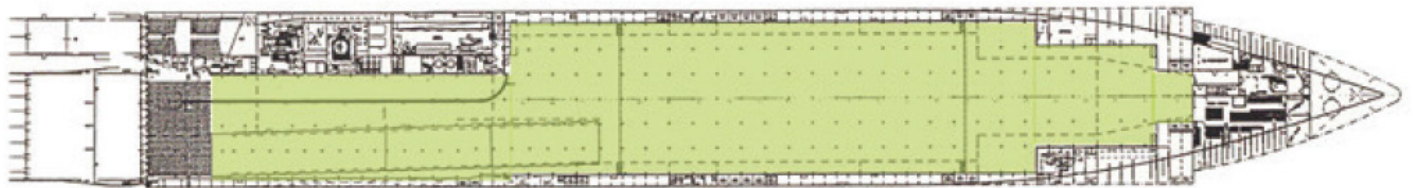
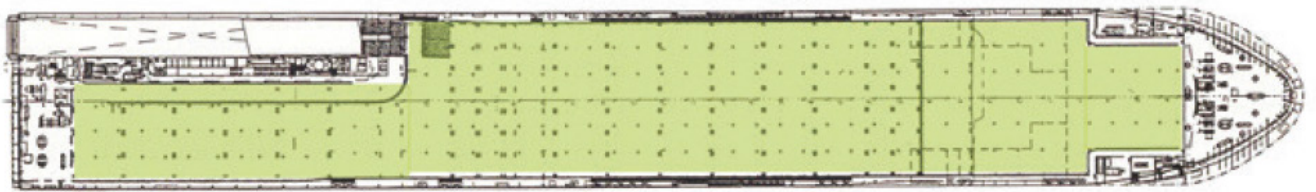
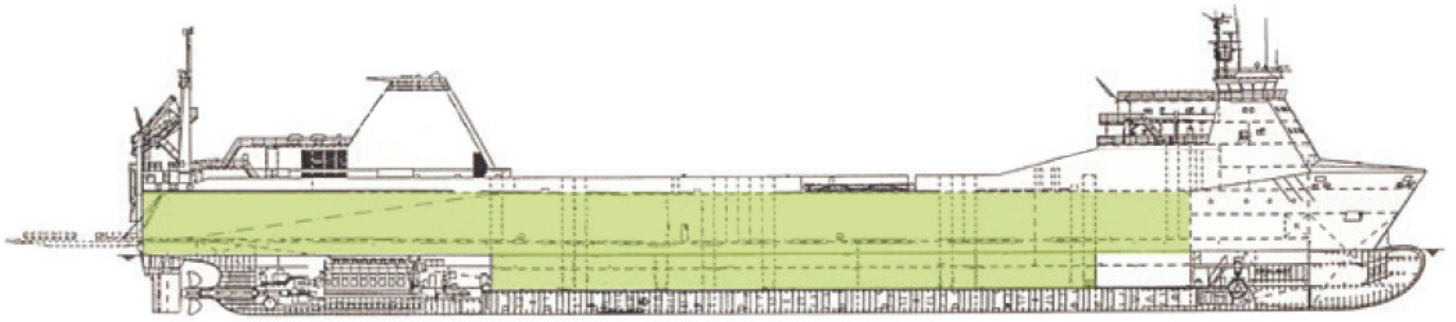
23.0 kn on abt 65 t

Trailer draft

19.0 kn on abt 35 t

Harbour consumption abt

0,5 t/h MGO



*Details are believed to be correct but given without guarantee. Description not to be used in charterparties.*

*All details are given in good faith.*

**FAROE ISLANDS**

Eystara bryggja  
P.O. Box 3296  
110 Tórshavn  
+298 309600  
cargo@cargo.fo

**DENMARK**

Erik Sondrupsvej  
10-12 9850 Hirtshals  
+45 96 55 03 50  
hirtshals@cargo.fo

**ICELAND**

Fornbúðir 5  
220 Hafnarfjörður  
+354 470 2800  
island@cargo.fo

**THE NETHERLANDS**

Mannheimweg 3  
3197 LR Rotterdam-Botek  
+31 (0) 10 490 22 80